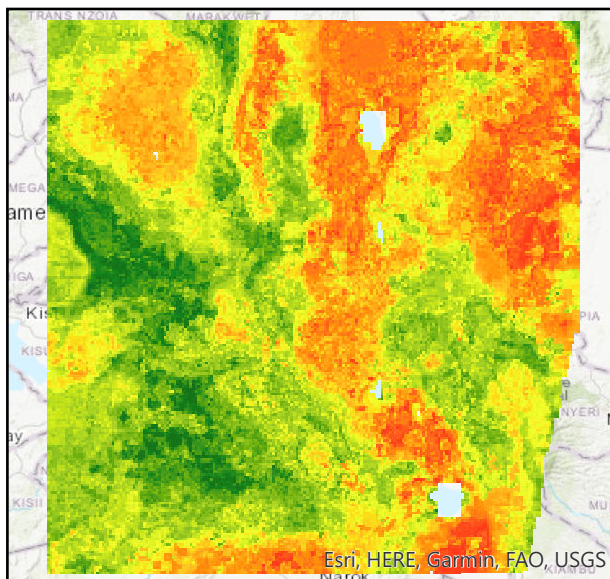
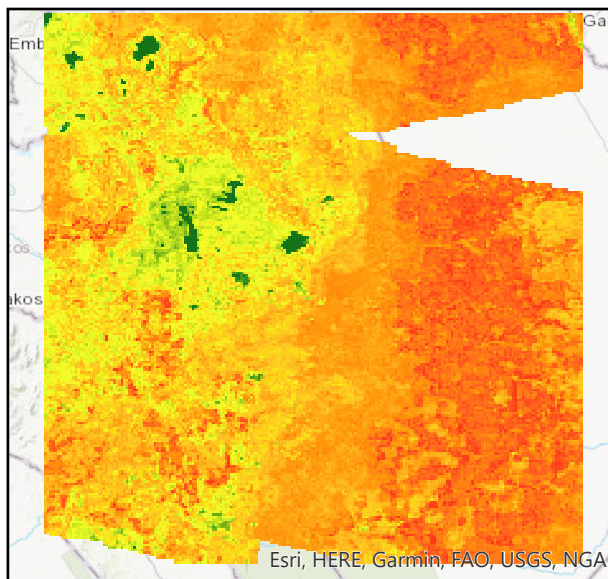


# NDVI Predictions

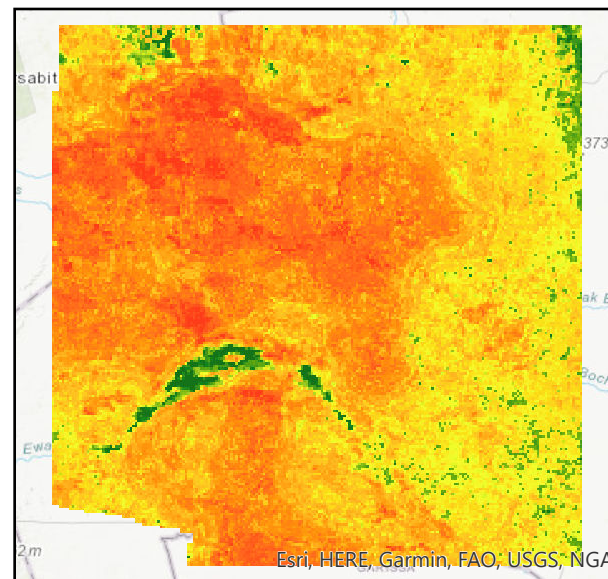
HP



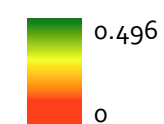
ASAL



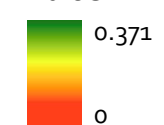
Arid



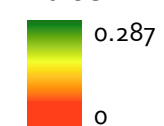
HP\_Final\_Prediction Value



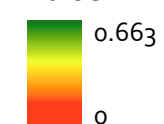
ASAL\_Final\_Prediction Value



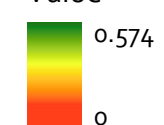
ARID\_Final\_Prediction Value



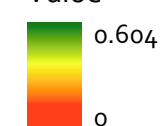
NDVI\_HP Value



NDVI\_ASAL Value

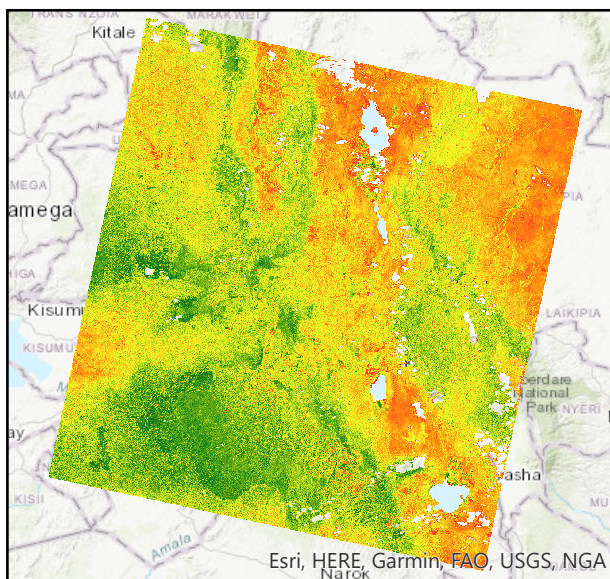


NDVI\_ARID Value

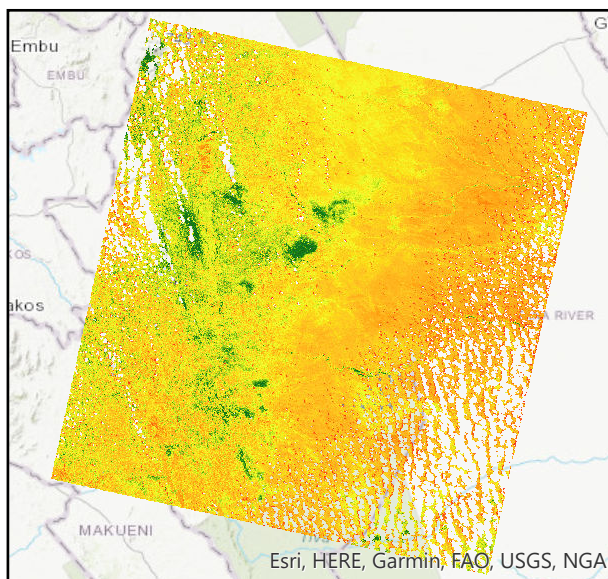


# Measured NDVI

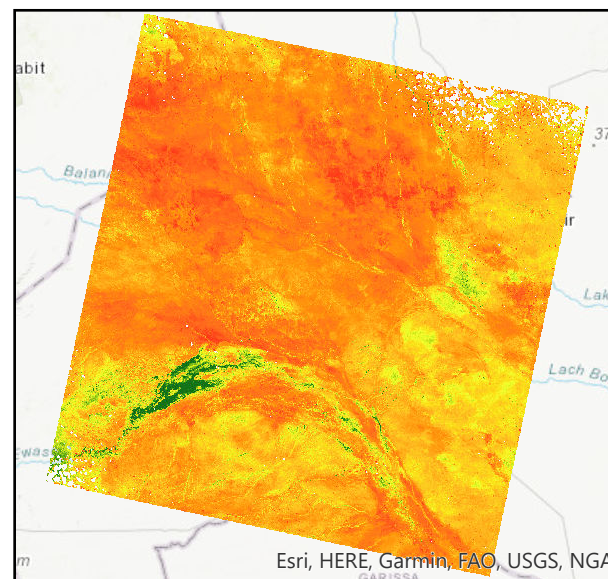
HP



ASAL



Arid



Notes:

- Prediction rasters (1079 m) are a different spatial resolution from the original measured NDVI rasters (30 m) due to processing limitations with RF regression.
- The NE corner of the ASAL NDVI prediction image is missing due to the lack of SMAP data availability for that particular location.
- Coarser spatial resolution causes the trends in the NDVI prediction images to appear more generalized; "hot and cold spots" tended to have corresponding higher / lower NDVI values