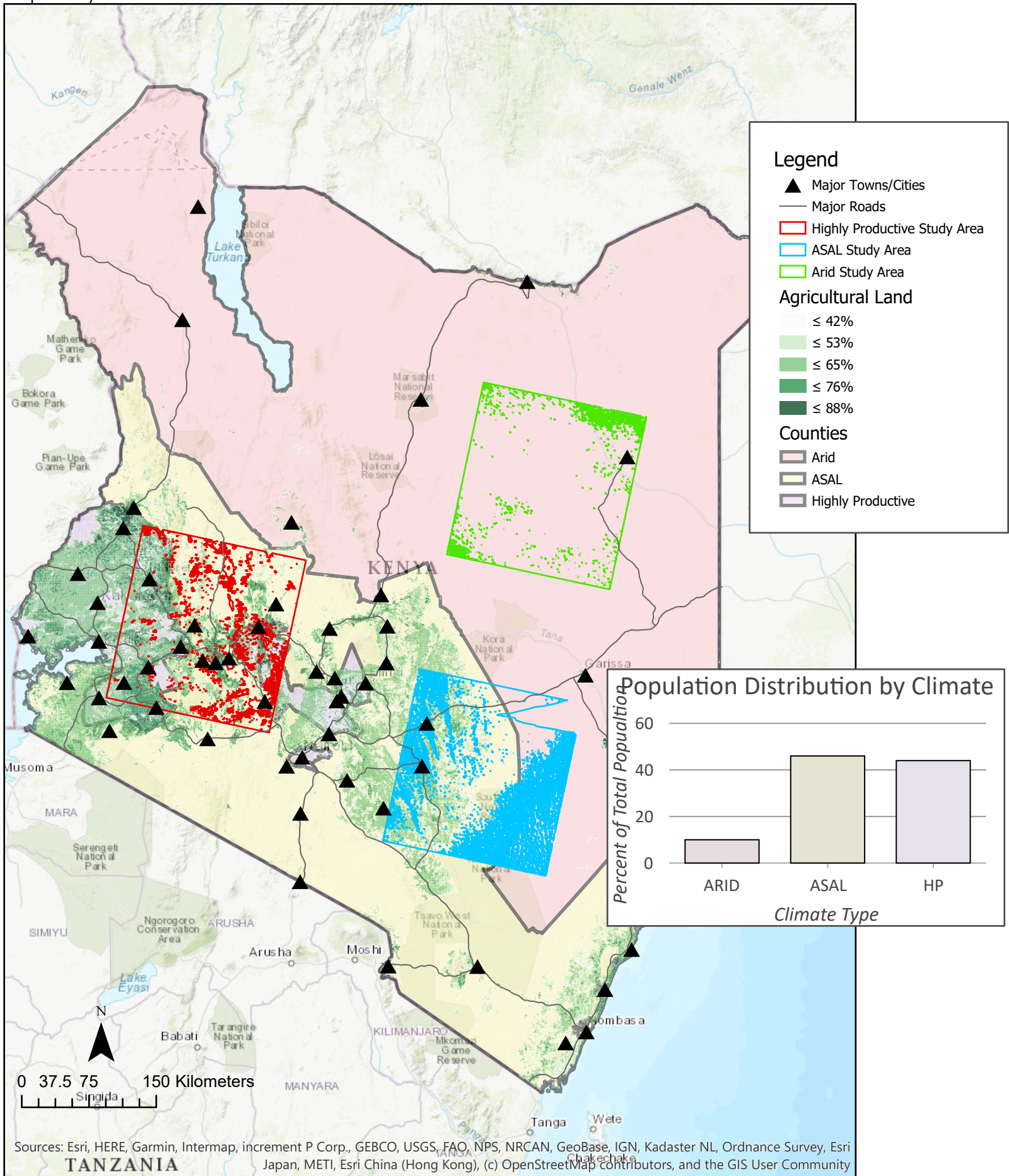


Study Area Overview Map

Prepared by: Andrew Yen



Kenya can be roughly divided into three unique climate types for the purposes of this study: Arid, Arid-Semi-Arid Lands (ASALs), and Highly Productive (HP). HP Areas are dominated by agricultural land, have higher population density, larger cities and enjoy relative food security. ASALs (the regions of particular interest for this study) rely on agriculture for subsistence farming and livestock feed. These areas have been food insecure in recent years due to severe drought and are home to the largest proportion of Kenya's population.